

FACULTY OF MEDICINE - UNIVERSITY OF LISBON



FACULTY OF MEDICINE - UNIVERSITY OF LISBON

PRE – GRADUATION

MEDICINE (Integrated Master)

Microbiology

Dietetics and Nutrition



**HEALTH SCIENCES
M.S. PROGRAM**

Biomedical Engineering (Integrated Master) with IST

ADVANCED EDUCATION

Post – Graduate Training for Health Professions

Medical Specialties

Nursing

Medical Technologists

Master (Interdisciplinary) and Doctorate Programs



FACULTY OF MEDICINE - UNIVERSITY OF LISBON

MISSION (I)

MEDICAL EDUCATION: A DOCTOR FOR THE 21st CENTURY

- Scientific Basis of Medicine
- Communication Skills (Patients/Families, Health Staff, Multicultural Society)
- Self - Learning and Continuous Education
- Member of a Professional Team (Health Systems)
- Awareness of Ethical and Social Aspects of Medicine
- Informed Career Choice



CURRICULAR REFORM

FACULTY OF MEDICINE - UNIVERSITY OF LISBON
MISSION (II)

Reinforcement of Academic Medicine

(institutional network for medical teaching and research cooperation)

**Professional Education, MD/PhD programs
and active CME/CPD**

**Anchor for Health and Life Sciences
strategic area within the UL**



FACULTY OF MEDICINE - UNIVERSITY OF LISBON

GOVERNANCE (I)

- **DIRECTOR**
- **SCIENTIFIC COUNCIL (25 MEMBERS)**

Professors and Researchers

PEDAGOGICAL COUNCIL (12 MEMBERS)

Tutors and Students (equal representation)

BOARD (DIRECÇÃO): Consulting Body to the Director

Deputy Dean, Secretary/Administrator FM, Director IMM, Director HSM,
Representative Affiliated Institutions, Chairmen of Scientific and Pedagogical
Councils, President of Student 's Assotiation



FACULTY OF MEDICINE - UNIVERSITY OF LISBON

GOVERNANCE (II)

- **ASSEMBLY OF THE FACULTY OF MEDICINE**

Composition:

- 7 PROFESSORS (PhD's)
- 1 TUTOR
- 1 RESEARCHER
- 1 REPRESENTATIVE FROM ADMINISTRATIVE PERSONEL
- 3 STUDENTS (ALL CYCLES)
- 2 EXTERNAL PERSONALITIES (SOCIETY)

Functions:

- Election of the Director and Approval of General Policy
- Policy Monitoring



FACULTY OF MEDICINE - UNIVERSITY OF LISBON

Number of Students - Total

	2004	2005	2006	2007	2008	Variation
Pre-Graduation						
Medicine	1, 373	1, 554	1, 639	1, 831	1, 971	
Dietetics/Nutrition	20	21	29	39	27	
Microbiology	38	42	51	72	45	
Total	1.431	1.608	1.719	1.942	2, 043	+42 %

Advanced Education

Post-Graduation Courses	148	708	807	496	821	
Master Degree Programs	182	216	350	284	322	
PhD/Doctorate	17	15	25	79	184	
					(67 - IMM)	



FACULTY OF MEDICINE - UNIVERSITY OF LISBON

BASIC SERVICES

Information technology / Informatics Unit

Library / Documentation Centre

**Preservation of historical documentation
Free Access to academic / hospital personnel
Virtual Library (VPNs, Wifi)**

Administrative Division

Financial Division

Academic Division

Student Support Office (GAPAE)

Planning and Evaluation Office (GPA)



FACULTY OF MEDICINE - UNIVERSITY OF LISBON

Administrative Staff

Secretary/Administrator 1

Chief of Division 4

- Library
- Administrative
- Academic
- Advance Education

Technicians 110

Support Staff 78



FACULTY OF MEDICINE - UNIVERSITY OF LISBON

- **DEPARTMENTS AND LABORATORIES (Basic Science)**

Anatomy

Molecular and Cell Biology

Physiology

Histology and Developmental Biology

Pharmacology and Basic Neurosciences

Biochemistry and Biopathology

Immunology

Microbiology

- Genetics

Pathology

- Biomathematics

Nuclear Medicine

Nutrition

- **DEPARTMENT OF PREVENTIVE AND SOCIAL MEDICINE**

- **DEPARTMENT OF CLINICAL SEMIOTICS**



**Simulation / Skills Laboratory for Introduction to Clinical
Medicine**

FACULTY OF MEDICINE - UNIVERSITY OF LISBON

- **Institute of Preventive and Social Medicine**
- **Institute for Advanced Education (IFA)**
- **Provision of Public / Community Services**
- **Student Support Office**
 - Health / Integration**
 - Tutorial Program (new students)**
 - Exchange programs (Socrates / Erasmus)**
- **Planning and Evaluation Office**



FACULTY OF MEDICINE - UNIVERSITY OF LISBON

**HOSPITAL SANTA MARIA (1,100 BEDS; 444,000 outpatients,
37,000 inpatients / year)**

- **Departments (Medicine, Surgery, Thorax and Clinical Neurosciences)**
- **Specialized University Clinics**

AFFILIATED HOSPITALS AND HEALTH CENTRES

10 Hospitals

230 Health Centres



PARTNESHIP FOR CLINICAL TEACHING

FACULTY OF MEDICINE - UNIVERSITY OF LISBON

FACULTY

	Basic Science	Clinical	Total
• Full Professors	12	18	30
• Associated / Assistant Professors	60	71	131
• Assistants / Lectures	114	194	309
• Instructors (registered)			21
• Researchers	7	3	10
• Clinical Tutors (<i>Docente-Livre</i>)		839	839



FACULTY OF MEDICINE - UNIVERSITY OF LISBON

STRATEGY

Strengthen Basic Science

Institute for Molecular Medicine

New facilities (*Egas Moniz* building)

Curricular Reform

Network of Affiliated Institutions for Clinical Teaching

Health Centres, Hospitals (Partnership)

Clinical Professorship (invitation)

New Programs Leading to Academic Degree

Microbiology

HEALTH SCIENCES M.S. PROGRAM

Dietetics / Nutrition

MD/PhD Program (Clinical Doctors)



FACULTY OF MEDICINE - UNIVERSITY OF LISBON

NEW INTEGRATED CURRICULUM (I)

- **Student-Centred, Learning vs Teaching focus**
- **Translational Medicine: cooperation between basic science/clinical medicine**
- **Integrated areas vs discipline based**
- **Early exposure to Clinical Medicine**
- **Emphasis on Community and General Medicine**
- **Bioethics and Social Aspects of Medicine**



FACULTY OF MEDICINE - UNIVERSITY OF LISBON

NEW INTEGRATED CURRICULUM (II)

- **Integration (*Foundation*) course / 1st week**
- **Modular Organization: integration and continuity**
- **Common Trunks: cooperation between basic science / clinical medicine**
- **Research initiatives for students**



FACULTY OF MEDICINE - UNIVERSITY OF LISBON

NEW INTEGRATED CURRICULUM (III)

Semester (6 yrs-12 semesters): 360 ECTS → Master Degree

**2 final semesters: professional year with
clinical rotations**

20% reduction in contact hours

**Exposure to Community Medicine (1st / 2nd / 6th yrs)
and hospital medicine (3rdyr: 9 weeks)**

**Electives (Medicine, Surgery, Pediatrics, Mental Health, Obst - Gyn,
Community Medicine) during 4th and 5th yrs.**

**Optional Curriculum: disciplines, practical courses, community
medicine, clinical practice and research projects**



FACULTY OF MEDICINE - UNIVERSITY OF LISBON

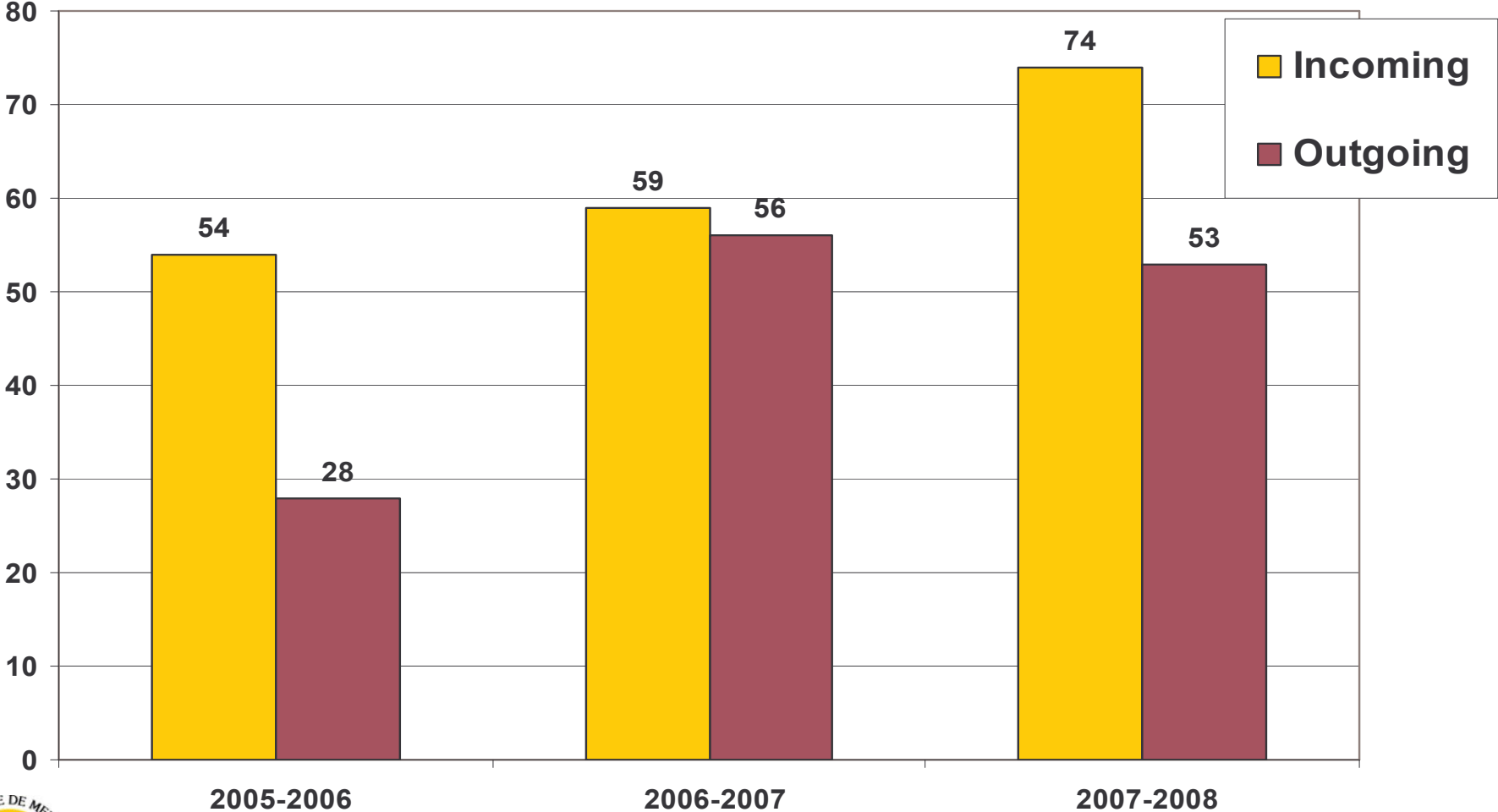
Number of new admissions to FMUL

	2006 / 2007	2007 / 2008
MEDICINE	340	360
• <i>Numerus Clausus</i>	295	295
• UMa	33	33
• Others	34	29
• Graduates	8	16
• Female/Male	65/35%	65/35%
MICROBIOLOGY	40	0
NUTRITION	20	0



FACULTY OF MEDICINE - UNIVERSITY OF LISBON

International Student Exchange



FACULTY OF MEDICINE - UNIVERSITY OF LISBON

ADVANCED EDUCATION (I)

POST-GRADUATE COURSES (< 6 m)

MASTER DEGREE COURSES (2 yrs)

**Theoretical program
Research project (Thesis)**

PhD / DOCTORATE PROGRAMS

**Biomedicine
Clinical Medicine
Health Sciences**



FACULTY OF MEDICINE - UNIVERSITY OF LISBON

ADVANCED EDUCATION (II)

Master Degree Courses

Bioethics

Pain

Sleep Disorders

Palliative Care

Neurosciences

(→ PhD)

Medical Education

Mental Disorders

School Health

Clinical Nutrition (→PhD)

Human Sexuality

Emerging Infections Diseases

Forensic and Legal Medicine

Child and Adolescent Abuse

Dependency and Behavioural Disorders



MD/PhD PROGRAM FMUL/IMM

FACULTY OF MEDICINE - UNIVERSITY OF LISBON

ADVANCED EDUCATION (III)

	2006 / 2007		2007 / 2008	
	Programs / Students		Programs / Students	
Post-Graduate Courses	11	496	12	821
Master Courses	8	284	20	796
PhD / Doctoral				
Biomedical Sciences		13		89
Clinical Medicine		4		80
Health Sciences				15



FACULTY OF MEDICINE - UNIVERSITY OF LISBON

GAPIC PROGRAM

Program on Education through Science (Pre-graduation Students)

Year	Nr. Projects
2004/2005	12
2005/2006	13
2006/2007	15
2007/2008	35
TOTAL	75



SCIENTIFIC ACTIVITY*
2005-2008
(DATA OBTAINED IN 6/11/2008)

	Original articles	Reviews	Letters	Total
FML	110	19		129
FMP	62	7	8	77
FMC	51	5		56

	Original articles	Reviews	Letters	Total
FML + HSM	323	33	37	393
FMP + HSJ	228	22	35	285
FMC + HUC	107	11		118

	Original articles	Reviews	Letters	Total
FML + HSM + IMM	445	54	41	540
FMP + HSJ + IPATIMUP	359	32	40	431



Citations: 3,886

**meeting abstracts not included*

FACULTY OF MEDICINE - UNIVERSITY OF LISBON

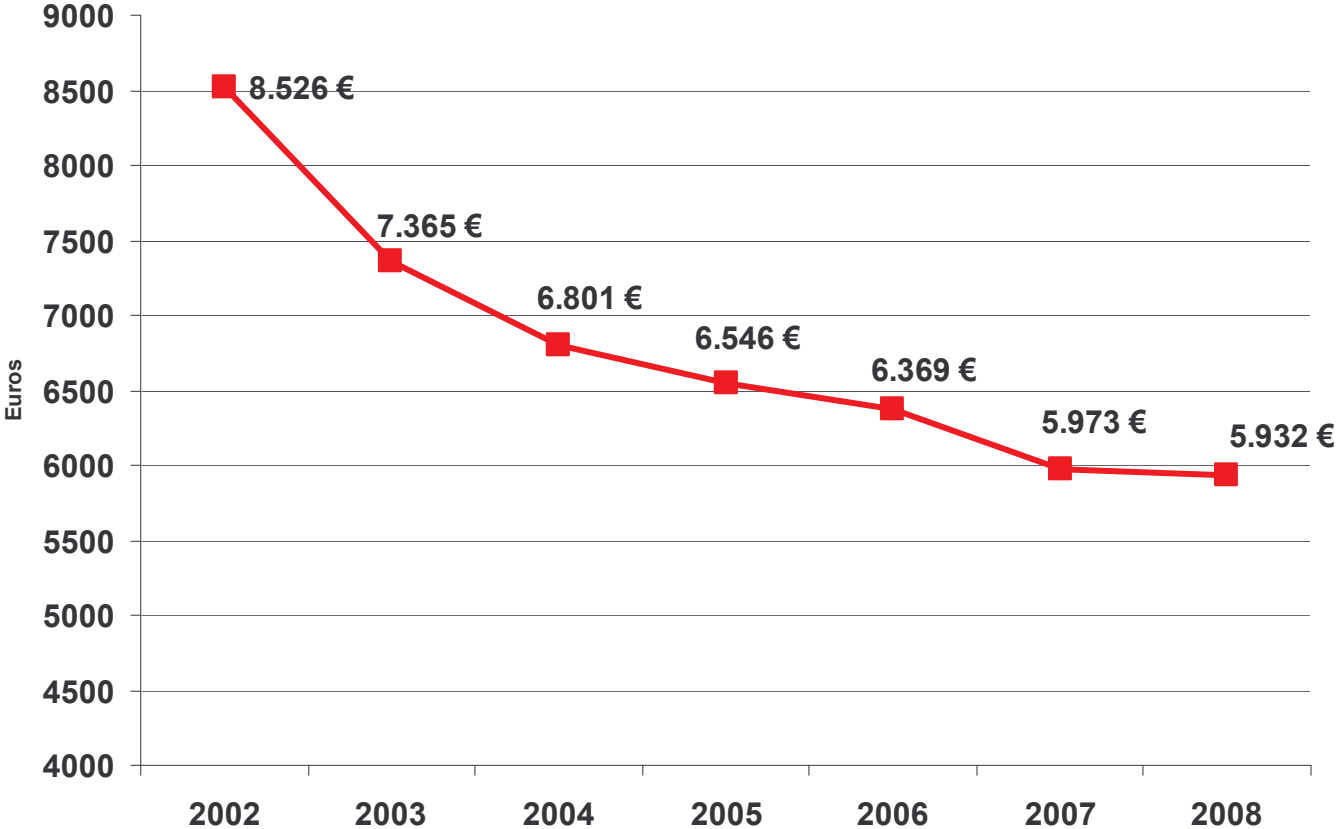
PUBLICATIONS

	N° of papers	%
Clinical Neurology	94	22.4
Basic Neurosciences	53	12.6
Peripheral Vascular Diseases	36	8.5
Immunology	32	7.6
Biochemistry and Molecular Biology	31	7.3



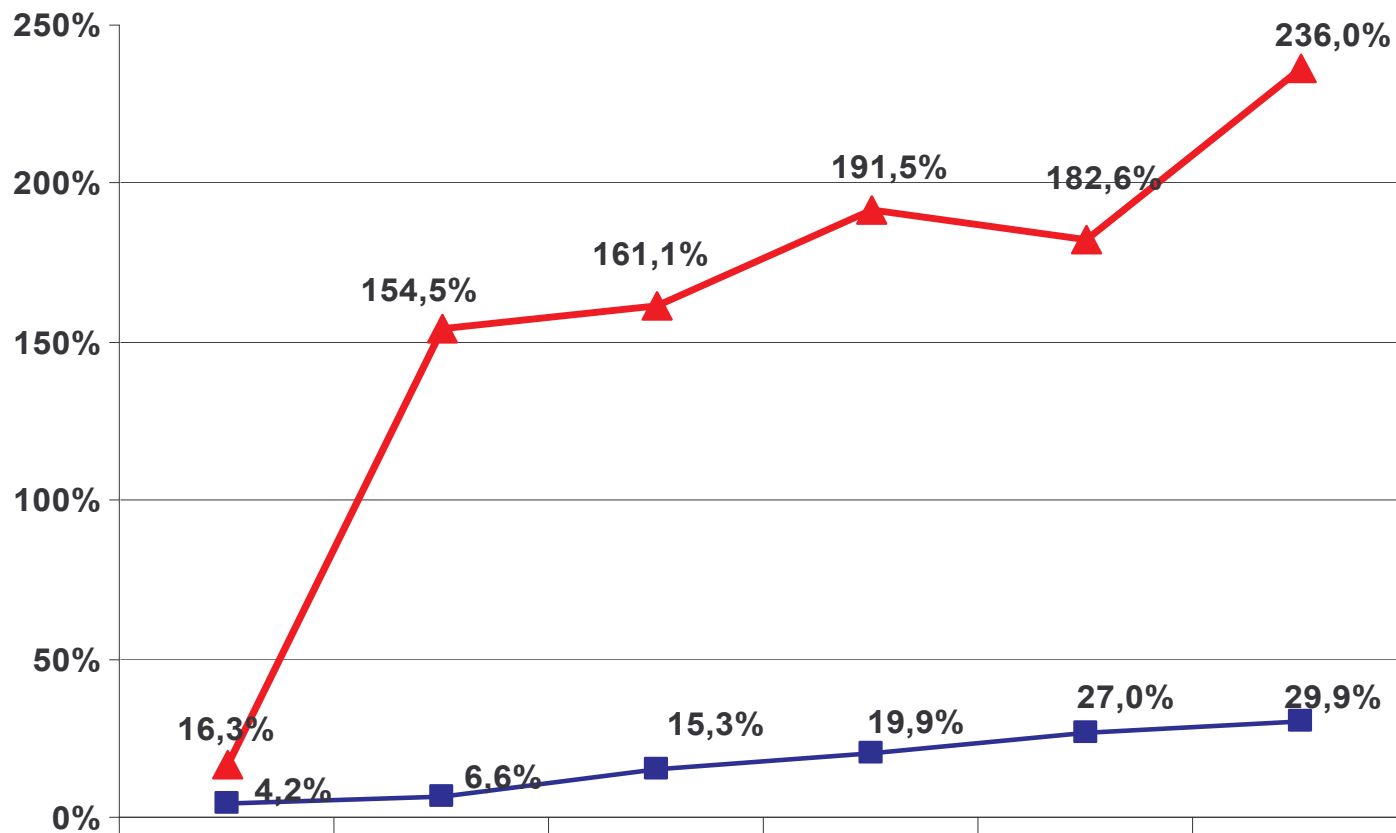
FACULTY OF MEDICINE - UNIVERSITY OF LISBON

Public Budget/Student



FACULTY OF MEDICINE - UNIVERSITY OF LISBON

Total Budget Evolution: Public & Institutional

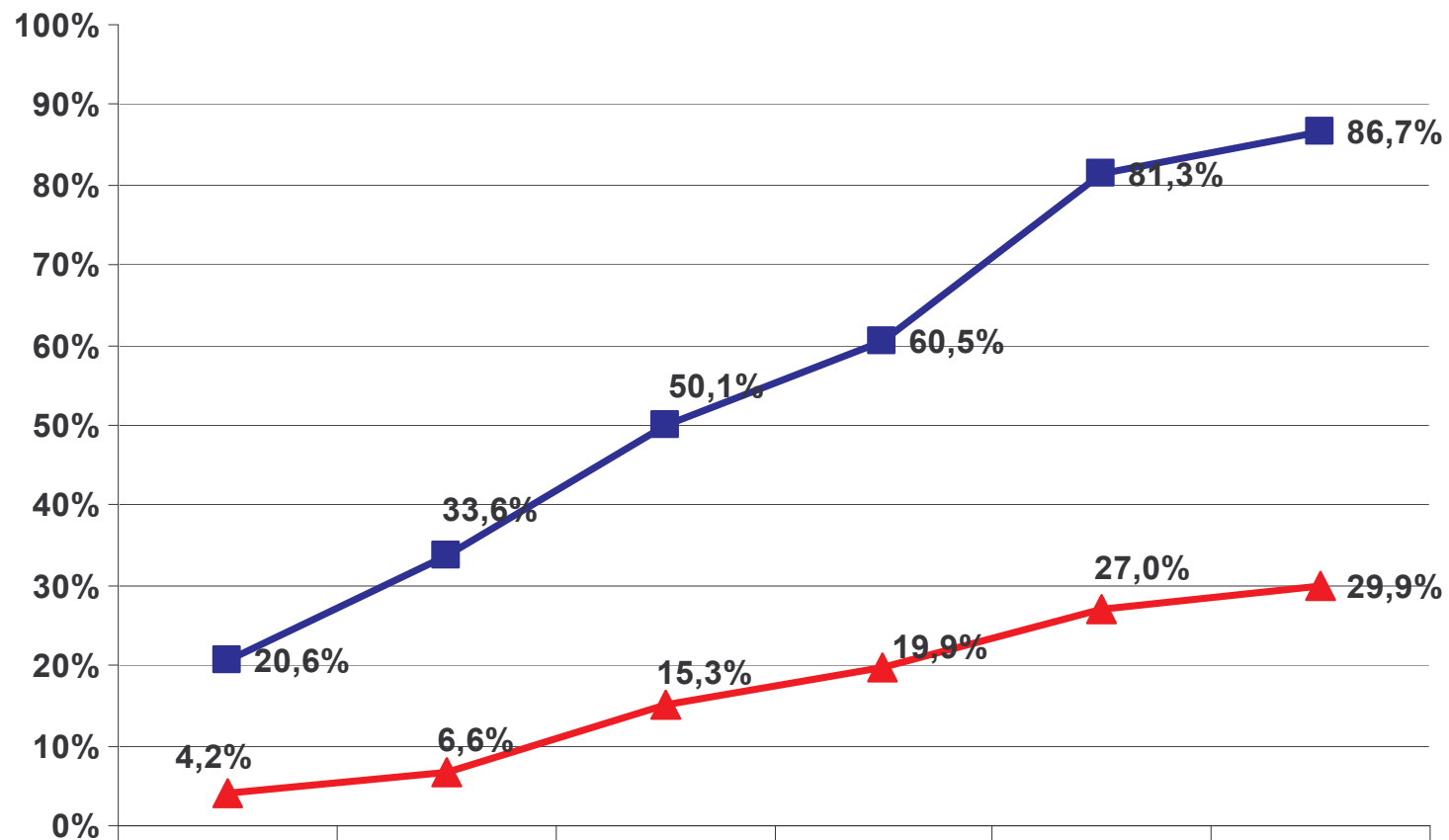


	2003	2004	2005	2006	2007	2008
■ Public Budget	4,2%	6,6%	15,3%	19,9%	27,0%	29,9%
▲ Institutional Income	16,3%	154,5%	161,1%	191,5%	182,6%	236,0%



FACULTY OF MEDICINE - UNIVERSITY OF LISBON

% Variation Students & Public

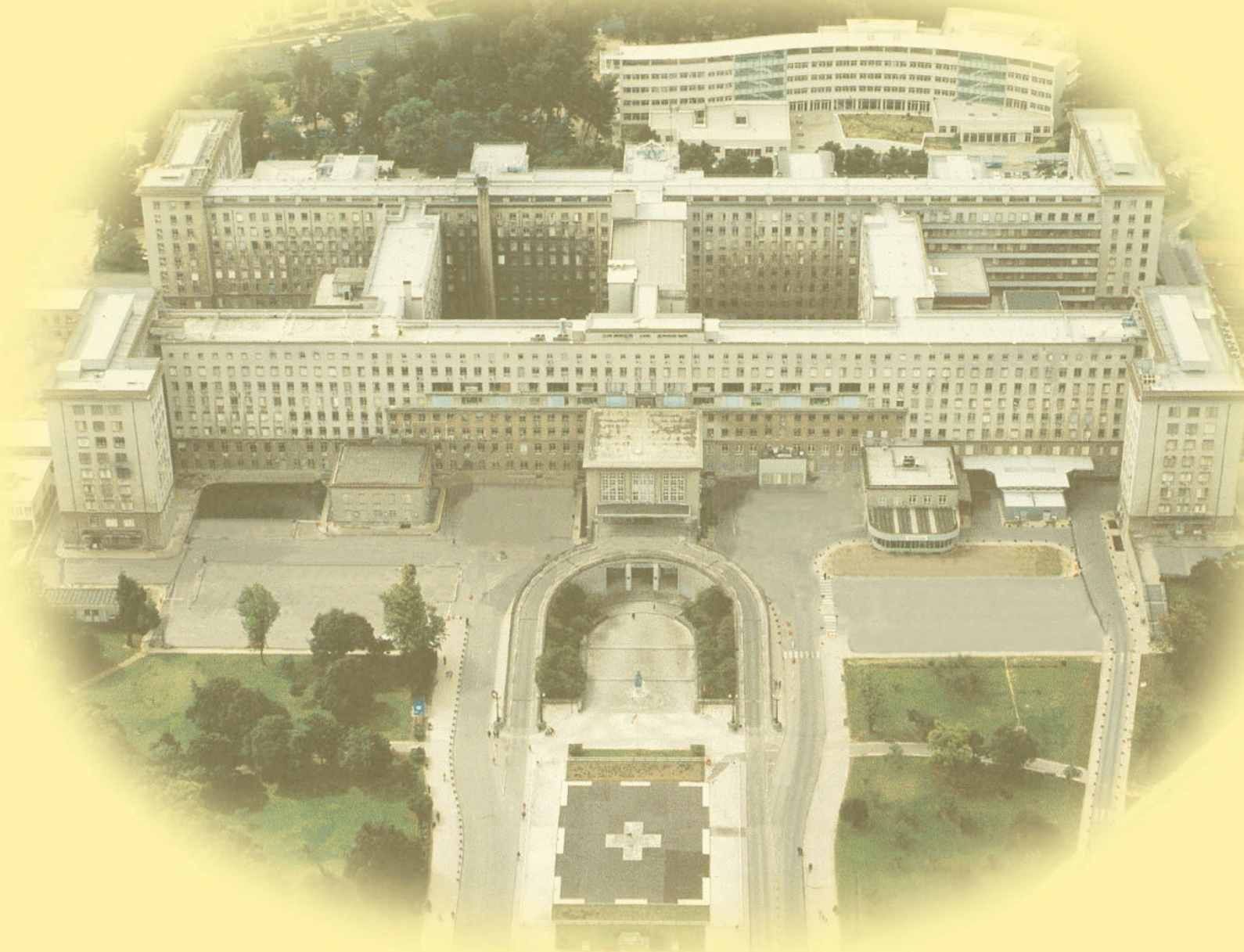


Public Budget	4,2%	6,6%	15,3%	19,9%	27,0%	29,9%
Student Numbers	20,6%	33,6%	50,1%	60,5%	81,3%	86,7%



FACULTY OF MEDICINE - UNIVERSITY OF LISBON

ACADEMIC MEDICAL CENTRE



ACADEMIC MEDICAL CENTRE

- Consortium between FM/IMM/HSM
- Partnership for Clinical Teaching with other Institutions
- Scientific development and international participation (*networking*)
- Cooperation with other national and international entities
- Programs with private Institutions for development of research and Clinical Medicine



NEW PROJECTED FACILITIES

